



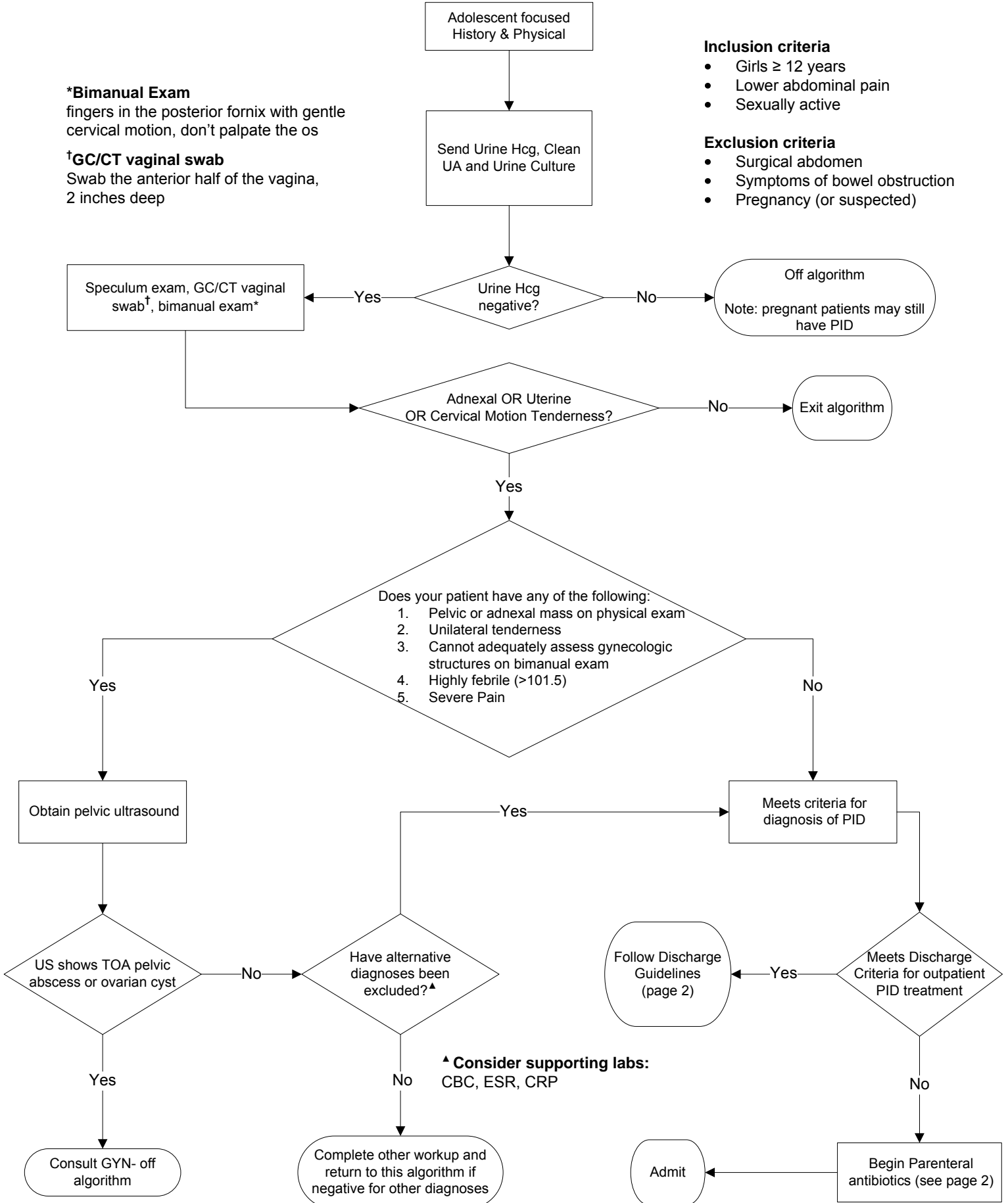
*Bimanual Exam
fingers in the posterior fornix with gentle cervical motion, don't palpate the os
†GC/CT vaginal swab
Swab the anterior half of the vagina, 2 inches deep

Inclusion criteria

- Girls ≥ 12 years
Lower abdominal pain
Sexually active

Exclusion criteria

- Surgical abdomen
Symptoms of bowel obstruction
Pregnancy (or suspected)



^ Consider supporting labs:
CBC, ESR, CRP

**If not sent at triage

***Proper bimanual exam is fingers inserted into posterior fornix (posterior to cervix) and cervix moved. Do not directly palpate the cervical Os as this area is sensitive.

Discharge Criteria:

- Afebrile
- Well appearing

Discharge Treatment:

Presumptively for GC, CT, BV, Trichomonas

Choose one cephalosporin PLUS doxycycline AND metronidazole (3 drug regimen)

1. Ceftriaxone 250mg IM/IV
2. Doxycycline 100mg PO BID x 14 days
3. Metronidazole 500mg PO BID x 14 days

For ALLERGIC patients only (not primary recommendation)

1. Levofloxacin 500mg PO daily x 14 days AND
2. Metronidazole 500mg PO BID x14 days

Discharge Follow Up (see page 5)

- Document private contact information in the patient note
- Ensure ability to fill prescriptions
- Discharge instructions/counseling
- Counsel on need to inform/get partner treatment
- Call PMD to communicate diagnosis

Admission Criteria (any one at clinician's discretion)

- Febrile
- Ill appearing
- High risk for noncompliance
- Unable to fill prescriptions
- GYN surgery/Abortion < 14 days ago
- Age <15 yrs
- Consider for patients 15-17 yrs
- Previous PID
- Failed outpatient antibiotics
- Unable to tolerate PO (including meds)

Parenteral/Inpatient PID Treatment: (2 drug regimen)

Cefoxitin 2g IV q6h AND Doxycycline 100mg PO BID

Penicillin/Cephalosporin allergic: (3 drug regimen)

Clindamycin 900mg IV q8h

AND

Gentamicin 3-5mg/kg IV q24h

AND

Doxycycline 100mg PO BID

Quality Measures

Process Measures

- Percent of patients with bimanual exam performed and documented
- Percent of patients having Hcg testing done
- Percent of patients who receive STI Testing (GC, CT, BV, Trichomonas)
- Percent of patients with complete antibiotic regimen prescribed
- Percent of eligible patients who have US ordered
- Percent of patients with PMD follow up call documented in chart

Considerations for Discharge

- Primary care provider (PCP) notified by phone
- Recommended follow-up appointment in 48-72 hours (schedule if during daytime hours) with PCP or Adolescent Clinic
- Social situation assessed (*Social work consulted if assistance is needed to make this assessment*)
- Ability to:
 - fill prescriptions
 - abstain from sexual intercourse
 - notify partner of his need for treatment
 - make follow-up appointment in 48-72 hours
- Evaluate
 - Substance use, other risk behaviors
 - Personal safety
 - Living situation
 - Financial situation, medical insurance
- Confidential patient contact information obtained – put in chart
 - Home phone
 - Cell phone
 - Alternative phone number
- Patient education sheet provided